

Hornet-SHB

802.11n Long-Rang AP/CPE Module



Hornet-SHB is the Atheros AR9331 Long-Rang 802.11n 2.4GHz AP/CPE Module. It also compatible with 802.11bg standards. The Hornet-SHB support passive PoE for easy installation and RP-SMA female antenna connector for various antenna use.

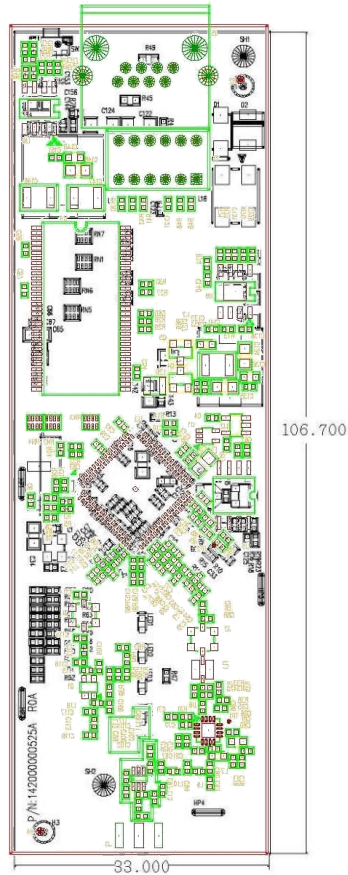
GPIO :

Feature	Original	GPIO#	Function	Description
Power LED	Power LED	NA	On	Power on, in normal operation
			Off	Power off or failed
WAN LED	WAN LED	GPIO17	On	WAN port is connected
			Blinking	Transmitting/receiving data
			Off	WAN port is not connected
Sensitivity Indicator LEDs	WLAN LED	GPIO0	High/Low	On/Off
	USB LED	GPIO1	High/Low	On/Off
	LAN#1 LED	GPIO13	High/Low	On/Off
	WPS LED	GPIO27	Low/High	On/Off
Reset Button		GPIO12	Pull-Low	Reboot: Push and Hold
				Restore to default: Push and hold for 5 sec. or more
Watch Dog Buffer Control		GPIO18	High	After resetting GPIO control buffer
Watch Dog clock		GPIO22	High/Low	Monitoring system status

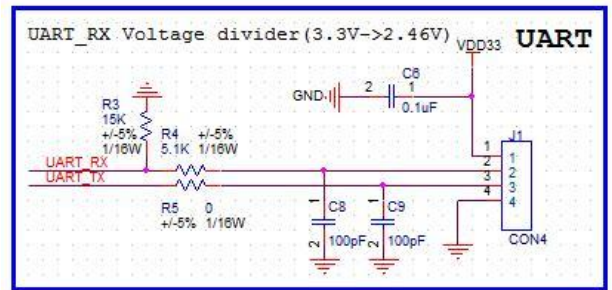
Hornet-SHB

802.11n Long-Rang AP/CPE Module

PCB Dimension :



UART:



For further details:

Alfa Network Inc.,
4F-1 No. 106, Rueiguang Rd.,
Neihu District,
Taipei City, Taiwan.
<http://www.alfa.com.tw>
sales@alfa.com.tw

Tel:+886-2-27968477 | Fax:+886-2-27968478

Specification:

Standard	IEEE 802.11n, IEEE 802.11bg(mixed mode)	MAC/BB Processor	AR9331
Frequency Band	2.4GHz ISM Band	Data Rate	802.11bg: Up to 54Mbps 802.11n: Up to 150Mbps
LED indicators	Power /Link/Ethernet/Signal	Ethernet interface	One 10/100 BASE-T RJ-45 Ethernet connector
Transmitter Power	802.11bg : 24dBm+/- 1dBm 802.11n (mixed mode) : 24dBm+/- 1dBm	Receive Sensitivity	-91dBm@802.11n rate MCS0 -75dBm@54Mbps, -95dBm@1Mbps
Antenna	RP-SMA external antenna port	Security	Wired Equivalent Privacy (WEP) data encryption Dynamic WEP key exchange WEP64/128, WPA, WPA2 802.1x
Power	PoE 12V / 1A	Operating Temperature	-20°C ~ 65°C
Storage Temperature	-10°C ~ 70°C	Humidity	5~90% (non-condensing)