

MiiNePort E1-SDK

MiiNePort E1 software development kit



- > Eclipse-based integrated software development tool
- > Source level debugger
- > Various serial-to-Ethernet sample codes
- > Mass production tool for easy firmware upload
- > Support Real COM mode operation functions



Overview

MiiNePort E1-SDK is a powerful and versatile software suite for proprietary firmware development on the MiiNePort E1. To expedite time-to-market, the MiiNePort E1-SDK provides comprehensive tools for development, testing, and mass-production. The software development kit includes:

MiiNePort-IDE: Integrated platform for development of serial-to-Ethernet firmware.

PComm Lite: Software application for testing serial and TCP/IP communication/transmission.

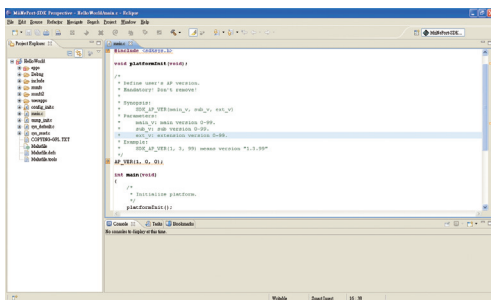
Search Utility: Search-and-update firmware utility for mass-production of modules and serial devices through simultaneous multiple-unit configurations.

MiiNePort-IDE (Eclipse-based Software Development Tool)

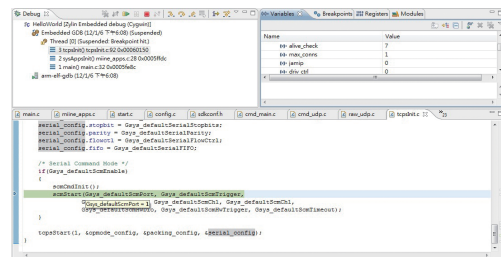
The MiiNePort-IDE is an Eclipse-based platform which includes a powerful source code editor, C/C++ compiler, and source level debugger tool. The MiiNePort-IDE also offers wizard assistance for step-by-step development of SNMP, Telnet, configuration, and

application functions. In addition, serial-to-Ethernet sample codes are provided for reference to assist in firmware development. For complex operating modes, such as Real COM and Ethernet modem, MiiNePort-IDE offers ready-to-run firmware with minimal configuration required.

Friendly Interface



Source Level Debug



Specifications

Software

OS: eCos

Software Development Tool: MiiNePort-IDE

Windows Real COM Drivers: Windows 98/ME/NT/2000, Windows (2012 x64, XP/2003/Vista/2008/7/8 x86/x64), Embedded CE 5.0/6.0, XP Embedded

Fixed TTY Drivers: SCO Unix, SCO OpenServer, UnixWare 7, SVR 4.2, QNX 4.25, QNX 6, Solaris 10, FreeBSD, AIX 5.x

Linux Real TTY Drivers: Linux kernel 2.4.x, 2.6.x, 3.0.x

Operation Modes: Real COM, Ethernet Modem

Wizard: Project/SNMP/CLI(Telnet)/SCM/User Configuration

Serial/Ethernet Test Tool: PComm Lite (Serial/TCP Server/TCP Client)

Search/Upload Firmware Utility: NPort Search Utility

Serial to Ethernet Sample Source Code

(Integrated in MiiNePort-IDE):

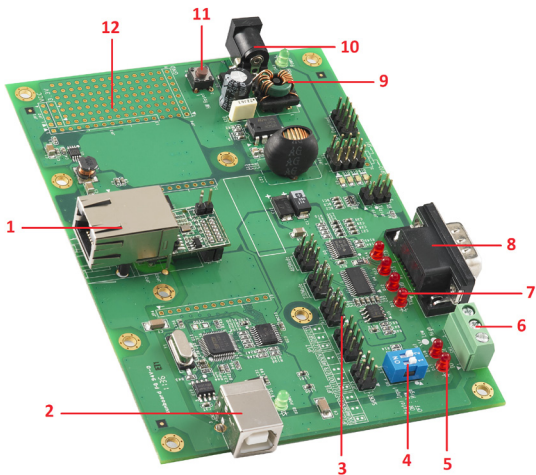
1. TCP Server Echo
2. TCP Server to Serial (Single connection)
3. TCP Server to Serial (Multi-connection)
4. TCP Client Echo
5. TCP Client to Serial (Startup)
6. TCP Client to Serial (Any character)
7. TCP Client to Serial (Designed destination TCP/IP port from serial)
8. UDP echo
9. UDP to serial

Environmental Limits

Altitude: Up to 2000 m

Note: Please contact Moxa if you require products guaranteed to function properly at higher altitudes.

Hardware Evaluation Board



Number	Description
1	MiiNePort E1 Module
2	USB Type B Connector (Debug)
3	Configurable Pin/Serial Interface Jumper
4	Digital Input Switch
5	Digital Output LED
6	DIO Terminal Block
7	Serial Line LED
8	Serial Port
9	Power LED
10	Power Jack
11	Restart Button
12	Circuit Pad

Ordering Information

Available Modules

MiiNePort E1-SDK: Software development kit for the MiiNePort E1 Series, MiiNePort E1 module included

Note: For a list of applicable modules available for order, please refer to the MiiNePort E1 datasheet.

Package Checklist

- MiiNePort E1-SDK module
- MiiNePort E1-SDK evaluation board
- Universal power adaptor
- 2 power cords
- USB cable
- Null modem cable
- Cross-over Ethernet cable
- Documentation and software CD
- Quick installation guide (printed)
- Warranty card